

Trails:

- Cable
- Dogleg
- Wolfe
- Hawk
- Lakes
- Loop
- Playground
- Sandy
- Shale Hill
- Telephone
- Cody
- Road 4

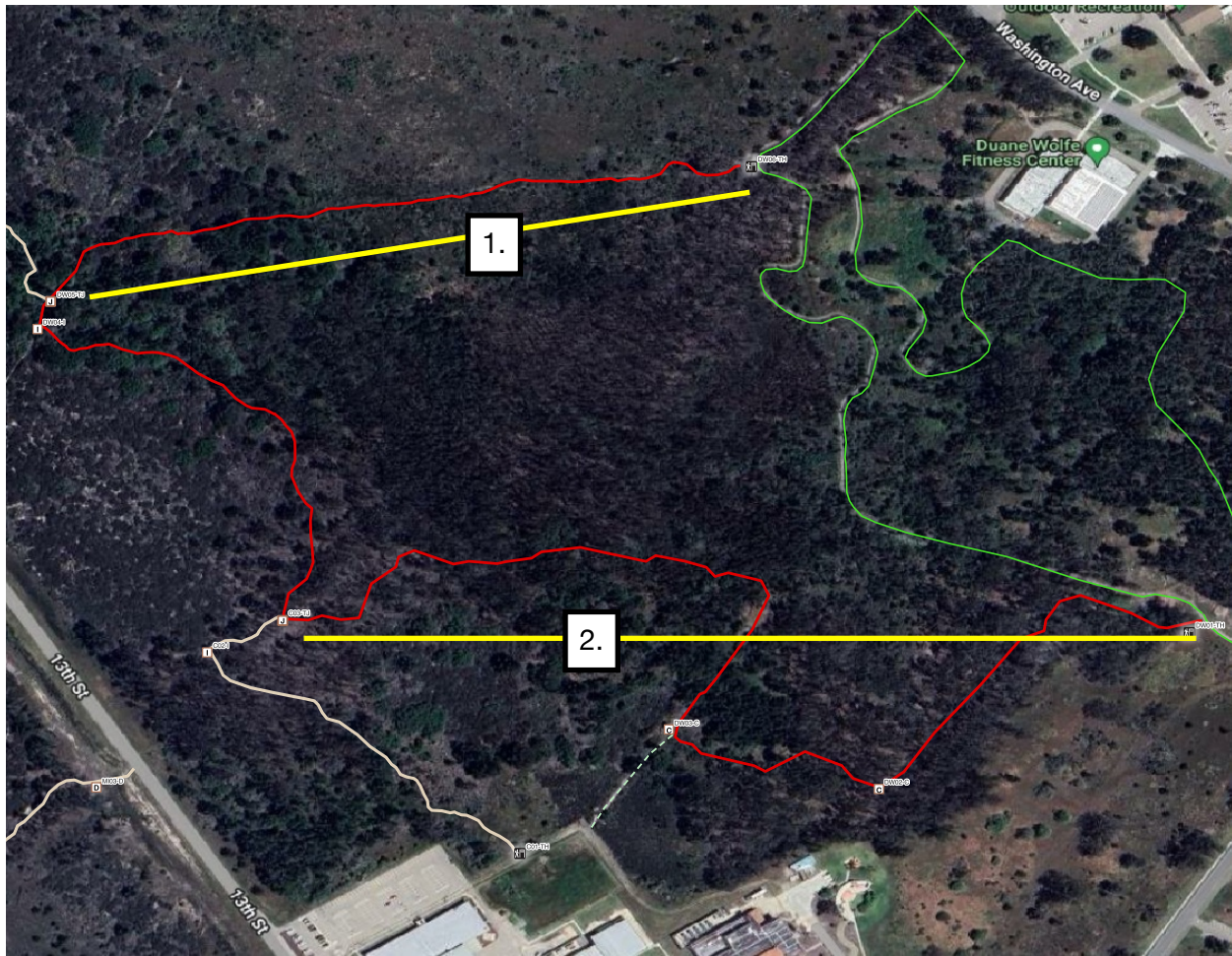
Cable	Current Status: OPEN
Location	Description
13th St. TH	This trailhead is now closed, for wildlife preservation.
	There is a new trailhead behind the Bldg 7011 parking lot.



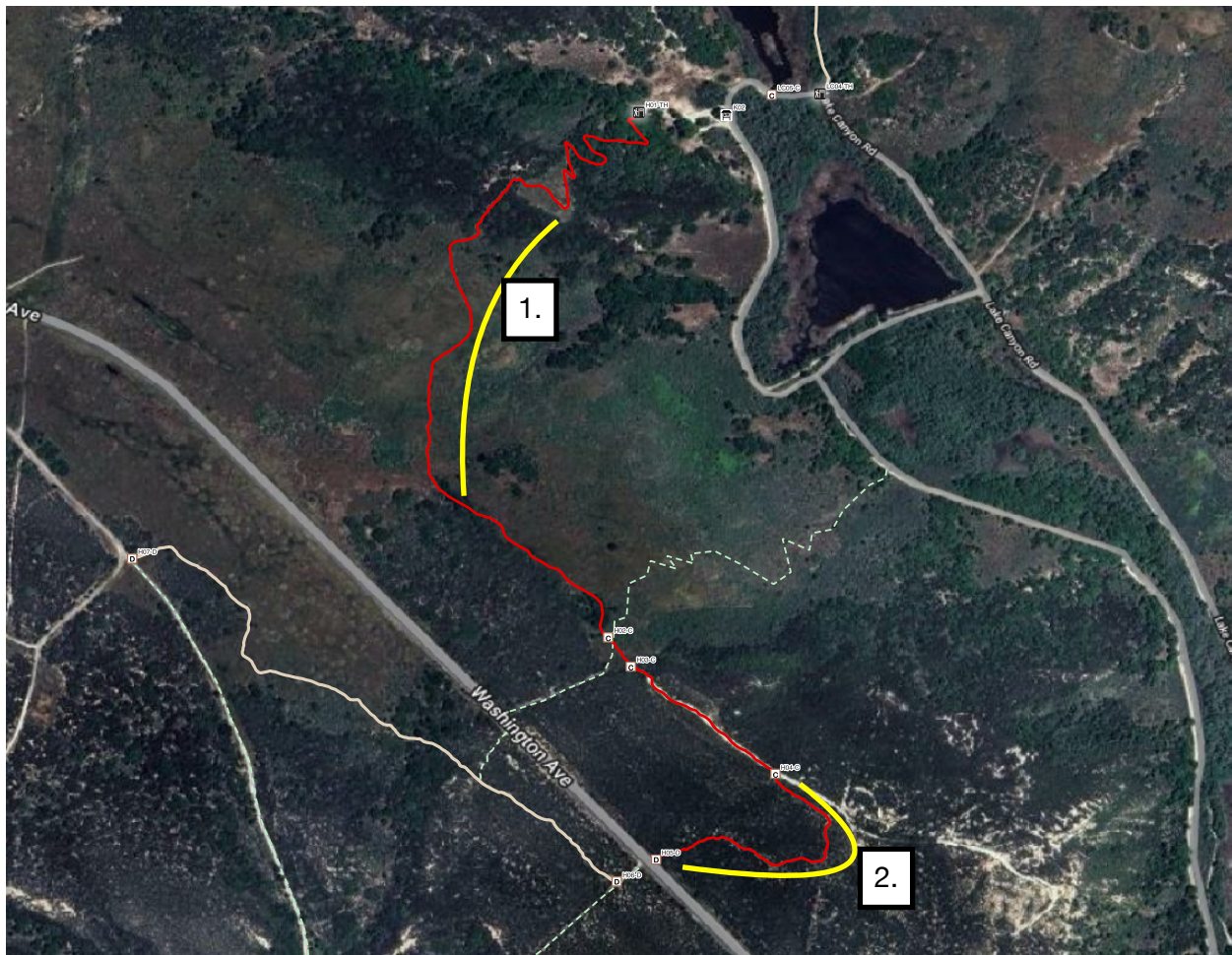
Dogleg	Current Status: OPEN
Location	Description
All	Trail is clear, dry, and pruning is complete for 2023.



Duane Wolfe	
Current Status: OPEN	
Location	Description
1. North TH	From the North Trailhead on the Fitness trail, to the junction with Telephone trail some trimming and pruning is still required. The TH area needs clearing.
2. South TH	From Fitness trail to Cable junction needs some ice-plant cutting and minor windfall pruning.



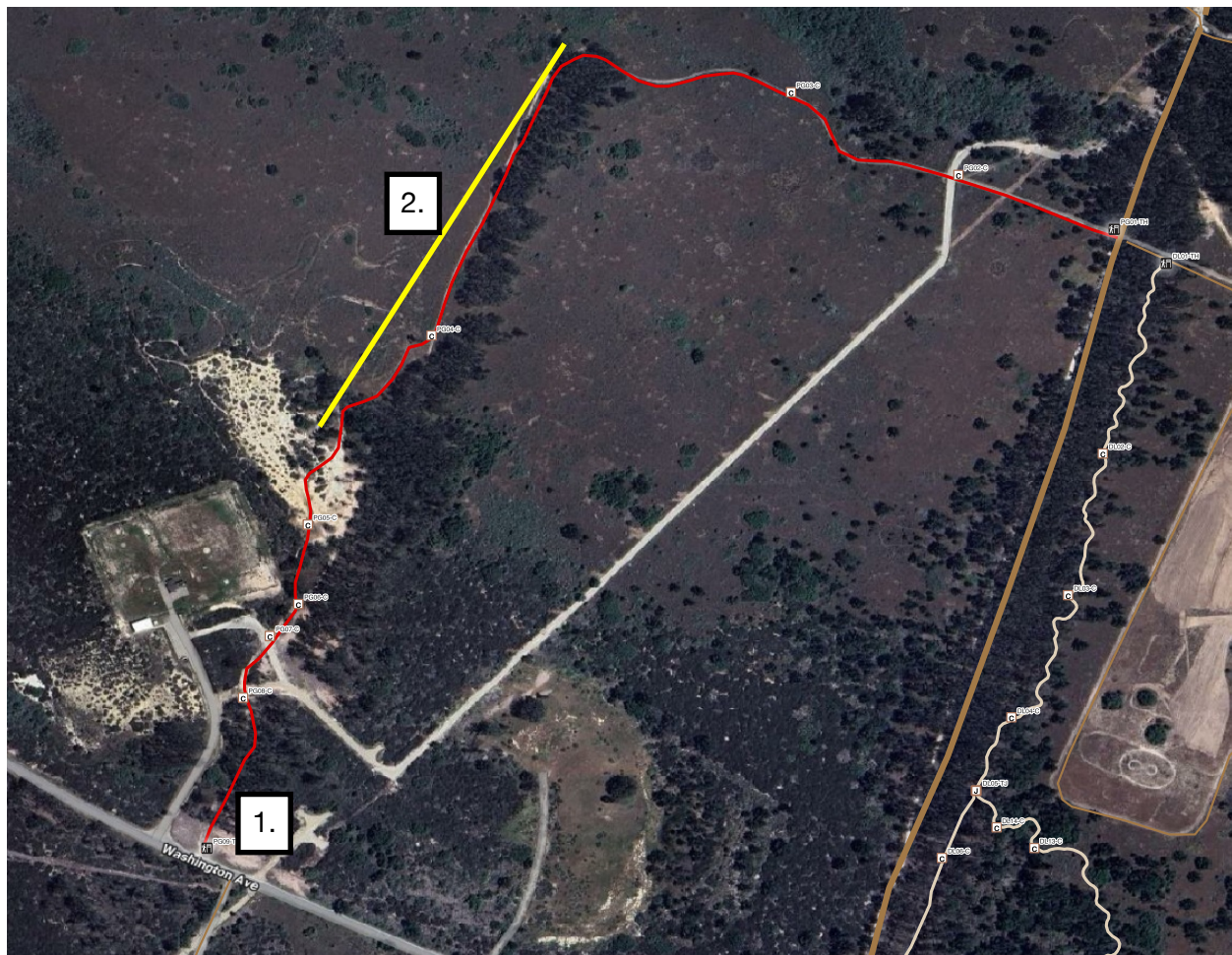
Hawk	Current Status: OPEN
Location	Description
1. Upper trail	From the trees at the top to the first switchback: drains need to be cleared and some tread repair work needed.
2. Top to Pine Canyon Rd.	Pruning the brush back and taking out staubs.



Lake Cyn.	Current Status: OPEN
Location	Description
All	Some moderate to heavy pruning is needed the entire length and some minor trimming and cutting ice plant. The 1/2 mile section from the South TH was pruned during the Feb work day. Rains have pushed a lot of sand on a portion and some moderate erosion occurred.
1.	Tread repair needed at the creek crossing
2.	Tread repair near the Lake trailhead at the bottom.



Playground	Current Status: OPEN
Location	Description
1. Washington TH	Ground repair needed due to the electrical line contract tearing up the area, old sign is destroyed.
2. From PopEye to Playground	Some minor trimming.



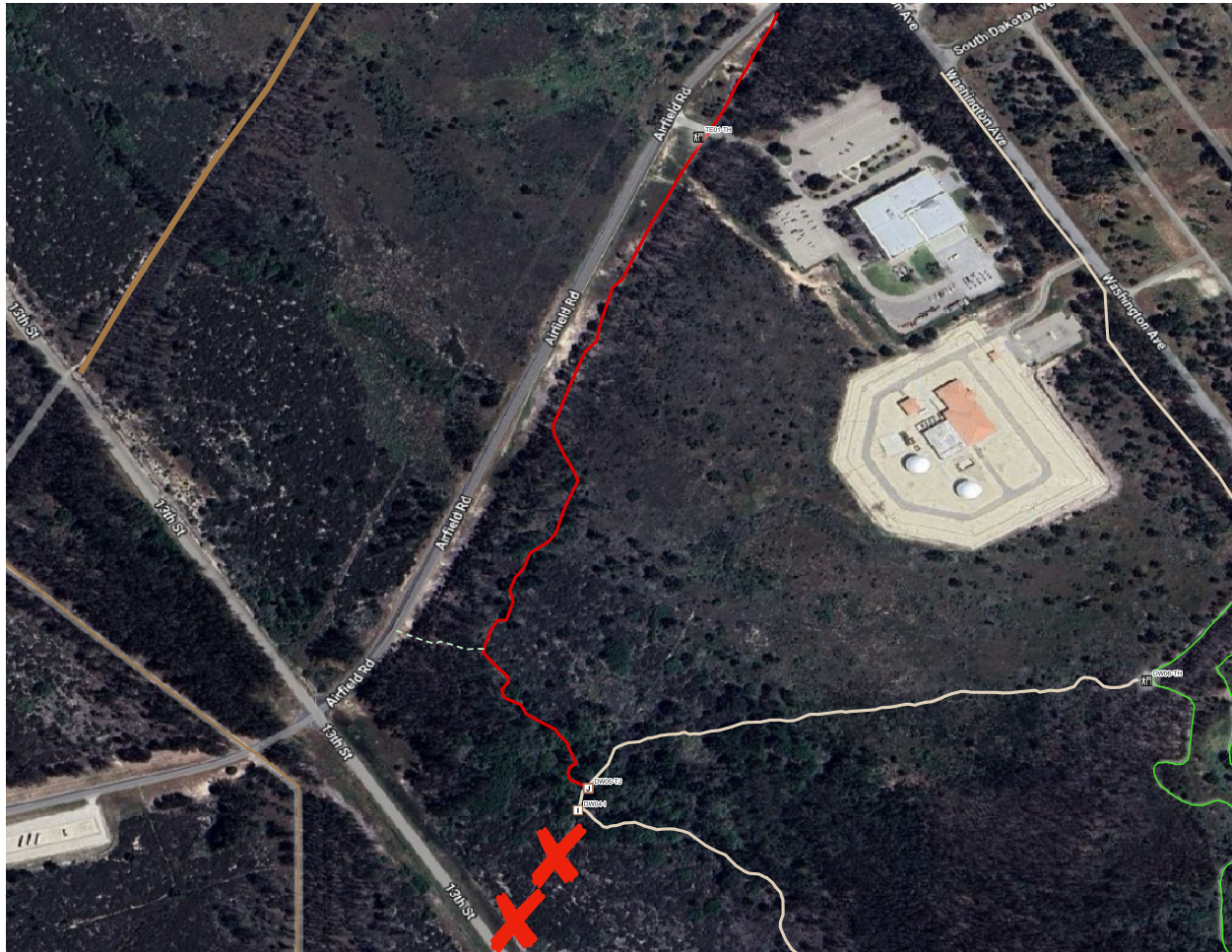
Sandy Hill	Current Status: OPEN
Location	Description
All	Moderate pruning



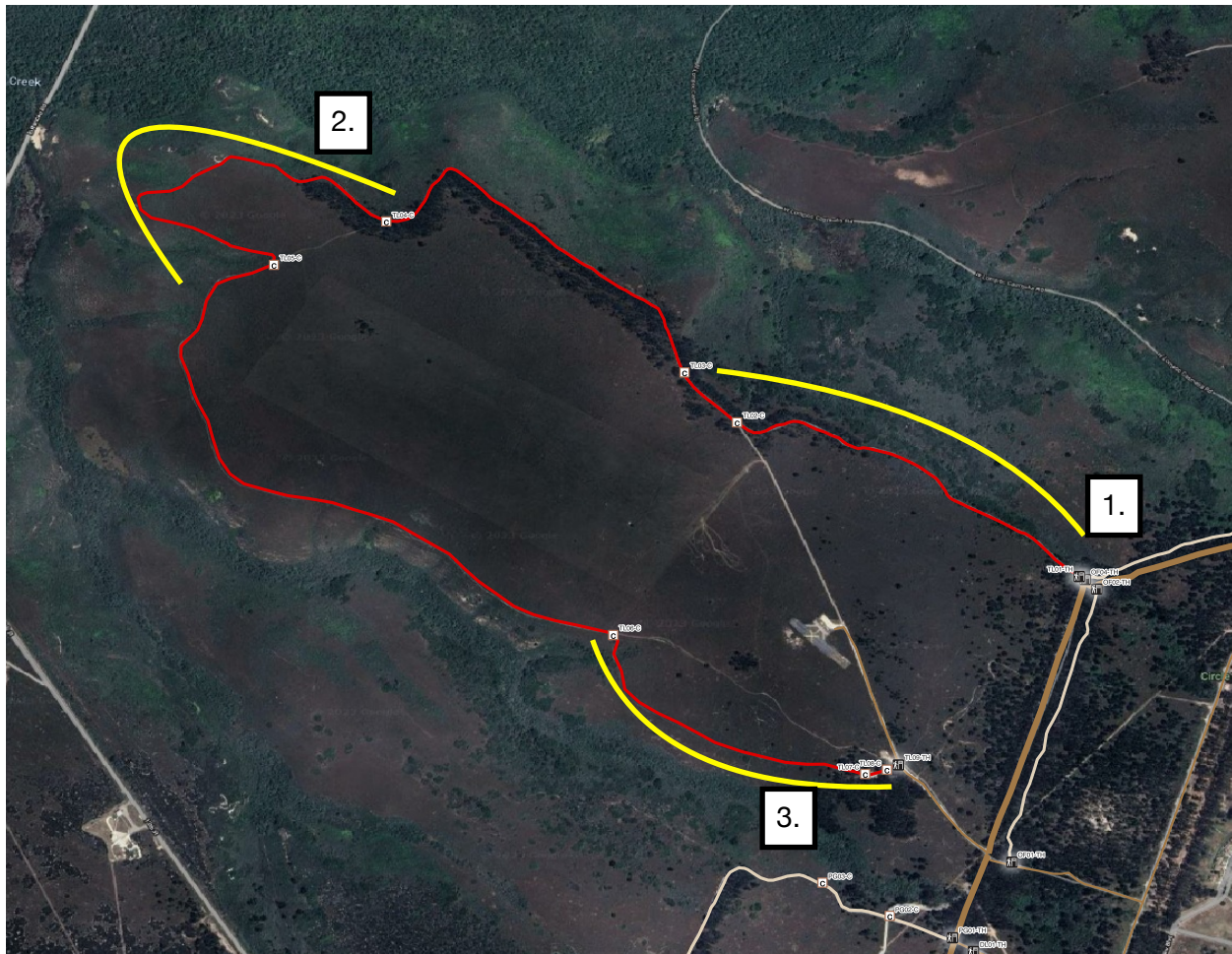
Shale Hill	Current Status: OPEN
Location	Description
	No issues, trail is trimmed, pruned and dry.
	Future plans include improving the switchbacks.



Telephone	Current Status: OPEN - South end of trail at the junction is under 3" of water.
Location	Description
All	Some minor trimming near the Wolfe trail junction to new connector. The 13th St. Trailhead is now closed for wildlife preservation. The new Wolfe trail connecting Telephone to Cable is open. A new connector is open to Airfield near 13th St.



The Loop	Current Status: OPEN
Location	Description
1. TH at the Fire Road	Completed Jan 2024: Trimming (with the string mower) needed, 1/3 mile. Some moderate to heavy pruning needed on Oaks along the first 1/4 mile.
2. Middle section	Trimming (with the string mower) needed, 1/3 mile. Some moderate pruning needed on the brush.
3. TH at the Model Airplane Rd.	Completed Feb 2024: Trimming (with the string mower) needed, 1/3 mile to the main trail junction. Some moderate pruning needed on the brush.



Miscellaneous	
Location	Description
Kelsey	Current Status: CLOSED
	Some tread work needed, the creek crossing us under water at the Archery Range
Cable West	Current Status: OPEN
	This trail had severe impacts from environmental contractor. It is in recovery mode.
Gravel Pit Loop	Current Status: OPEN
	No issues.
John's Trail	Current Status: OPEN
	No issues.
Old Fire Rd. Trail	Current Status: OPEN
Between The Loop and Old Fire Rd Junction	Some minor trimming.

Cody (red trail)	Current Status: PARTIALLY OPEN - The top (North) one mile portion is wet from all the rains this winter, Please stay off until it dries out.
Location	Description
1. Switchbacks on the south end.	Some pruning needed on the switchback. Some riders have been cutting the switchbacks and we need to direct traffic to stay on the trail. This trail was approved to eliminate the erosion caused by the fall-line trail going straight down the hill. Please don't cut the switchbacks and avoid any further problems with environmental concerns. A switchback is seeping from all the rains and is very muddy. Do not drag wheel through it!
Pine Canyon (green trail)	Current Status: OPEN
Location	Description
All	Moderate to Heavy pruning of brush (lupins) and the Oaks.
2. Leaning Oak	Completed Jan 2024: A retention wall is needed at the leaning Oak near the top end of the single track.

